

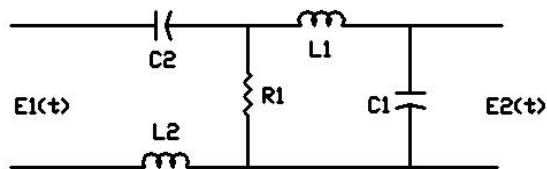
Theme: Composition of the mathematical Description of elements ACS

Task (on variant):

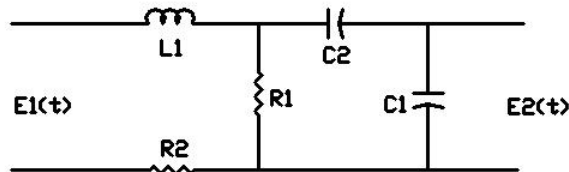
The basic circuit of the correcting device with constant design data is set. Receive the mathematical description (model) of the correcting device; take $e_1(t)$ for an input, to take $e_2(t)$ for an output.

Variants:

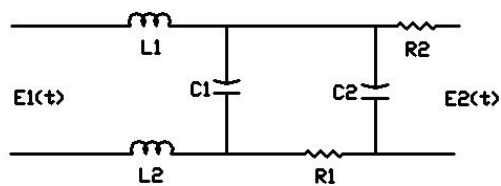
1)



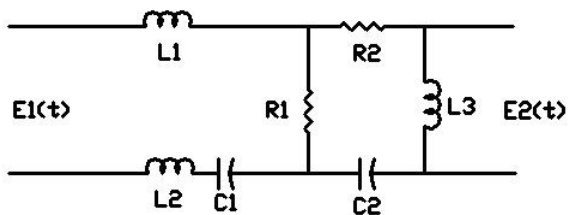
2)



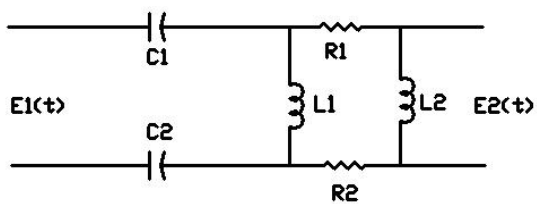
3)



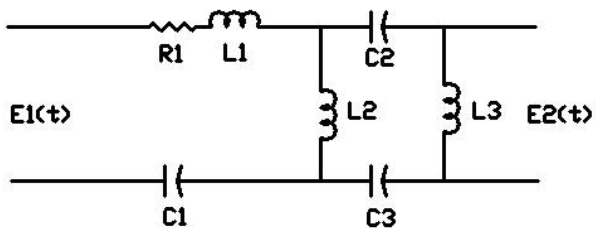
4)



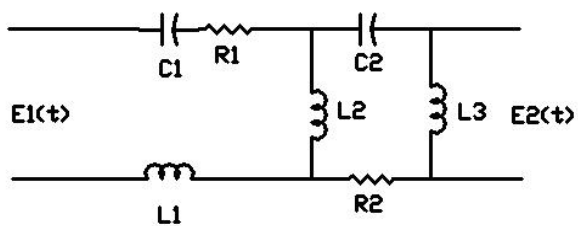
5)



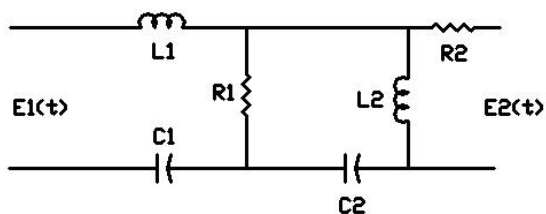
6)



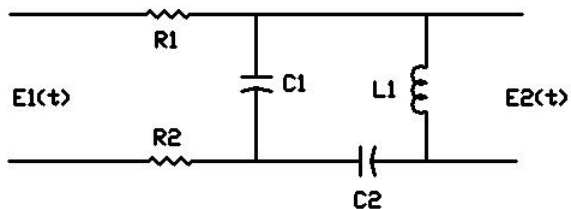
7)



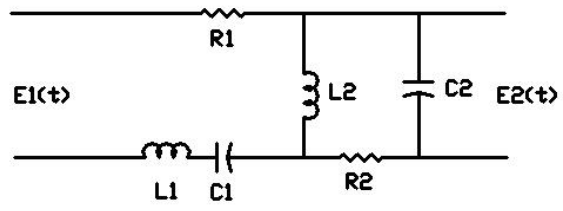
8)



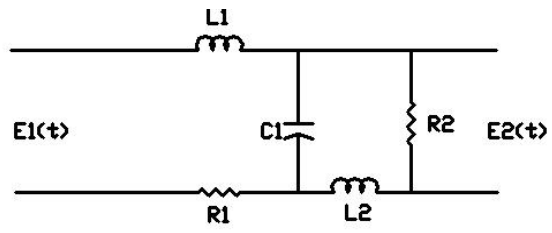
9)



10)



11)



12)

